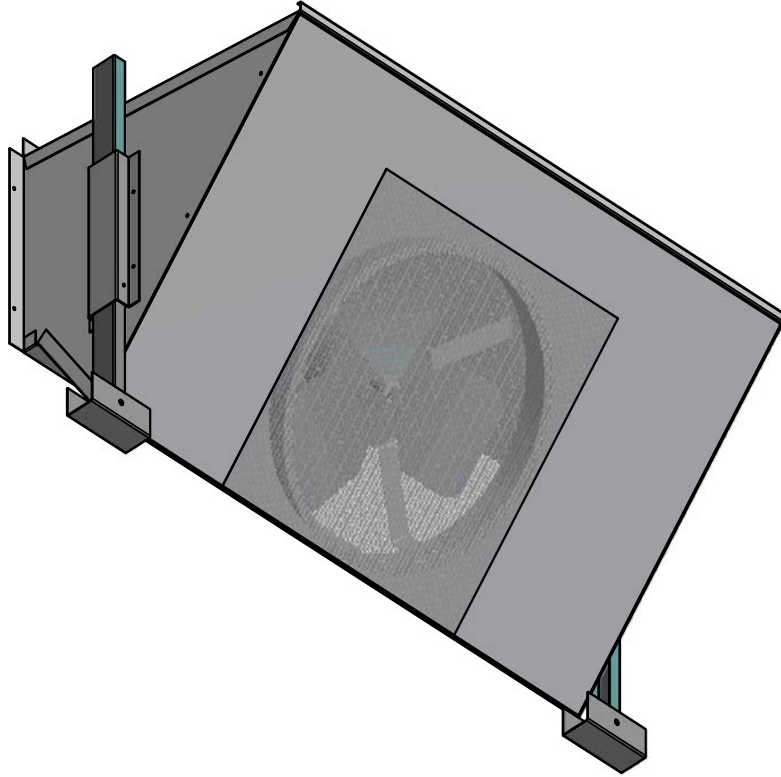


PE3672XB INSTALLATION AND OPERATION GUIDE



INSTALLATION WITH ECONOMIZER

1. Open carton and inspect contents for shortages and damage.
2. Disconnect the power to the unit.
3. Remove the economizer fresh air hood and barometric relief hood.
4. Remove the horizontal duct cover panel.
5. Remove the barometric relief dampers from the economizer and discard.
6. Slide the support legs through the guides. (Figure 1)
7. Feed the line voltage and low voltage wires through the knockout provided in the damper rack of the economizer.
8. Attach the power exhaust hood over the barometric relief opening. Extend the support legs and secure them using the screws provided.
9. Feed the line voltage leads to the control section of the package unit and attach them per the included wiring diagram.
10. Attach the low voltage control leads to the economizer controller per the included wiring diagram.
11. Adjust the exhaust set point. From the factory, the power exhaust is set to engage when the fresh air dampers are open 70%.
12. Reinstall the fresh air hood.
13. Weather proof the fresh air hood and power exhaust hood using approved methods.
14. Reinstall the horizontal duct cover panel.

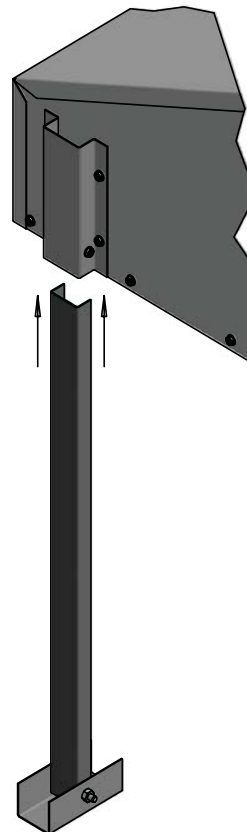
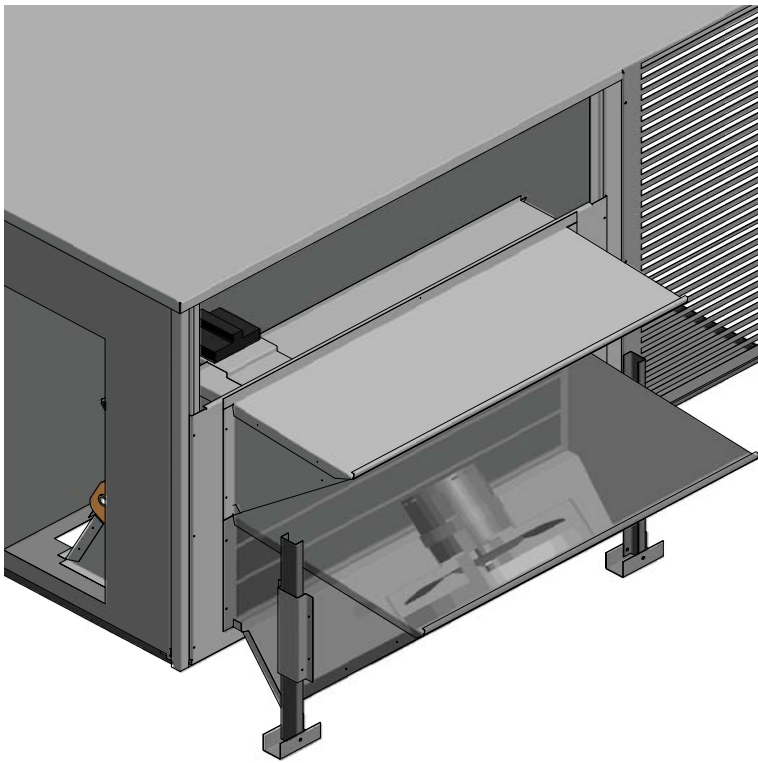


Figure 1



CONTENTS

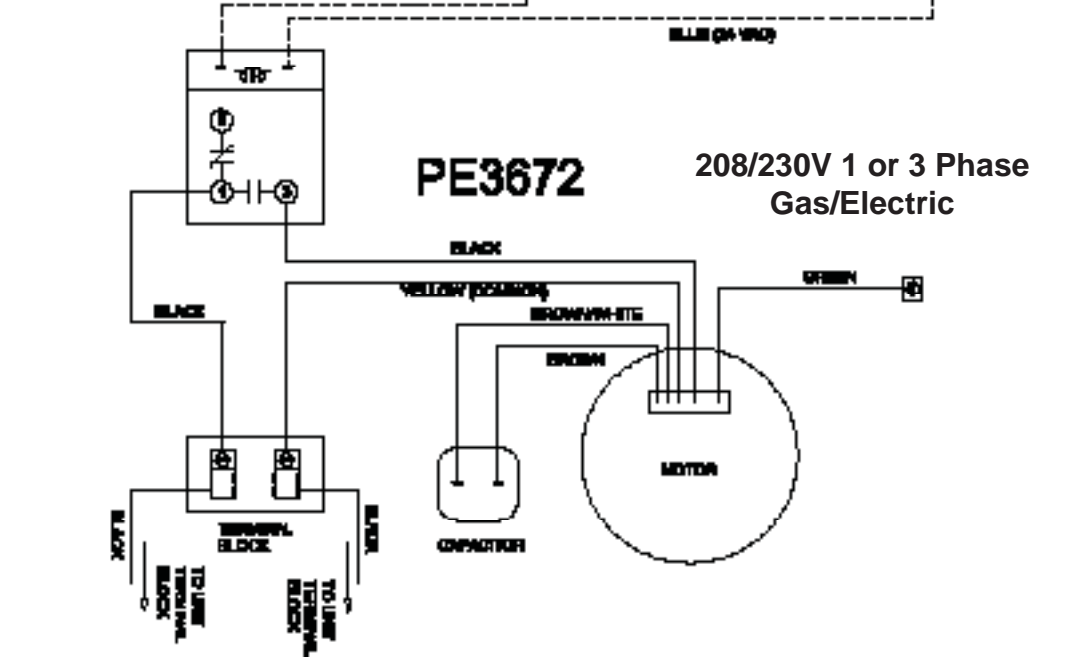
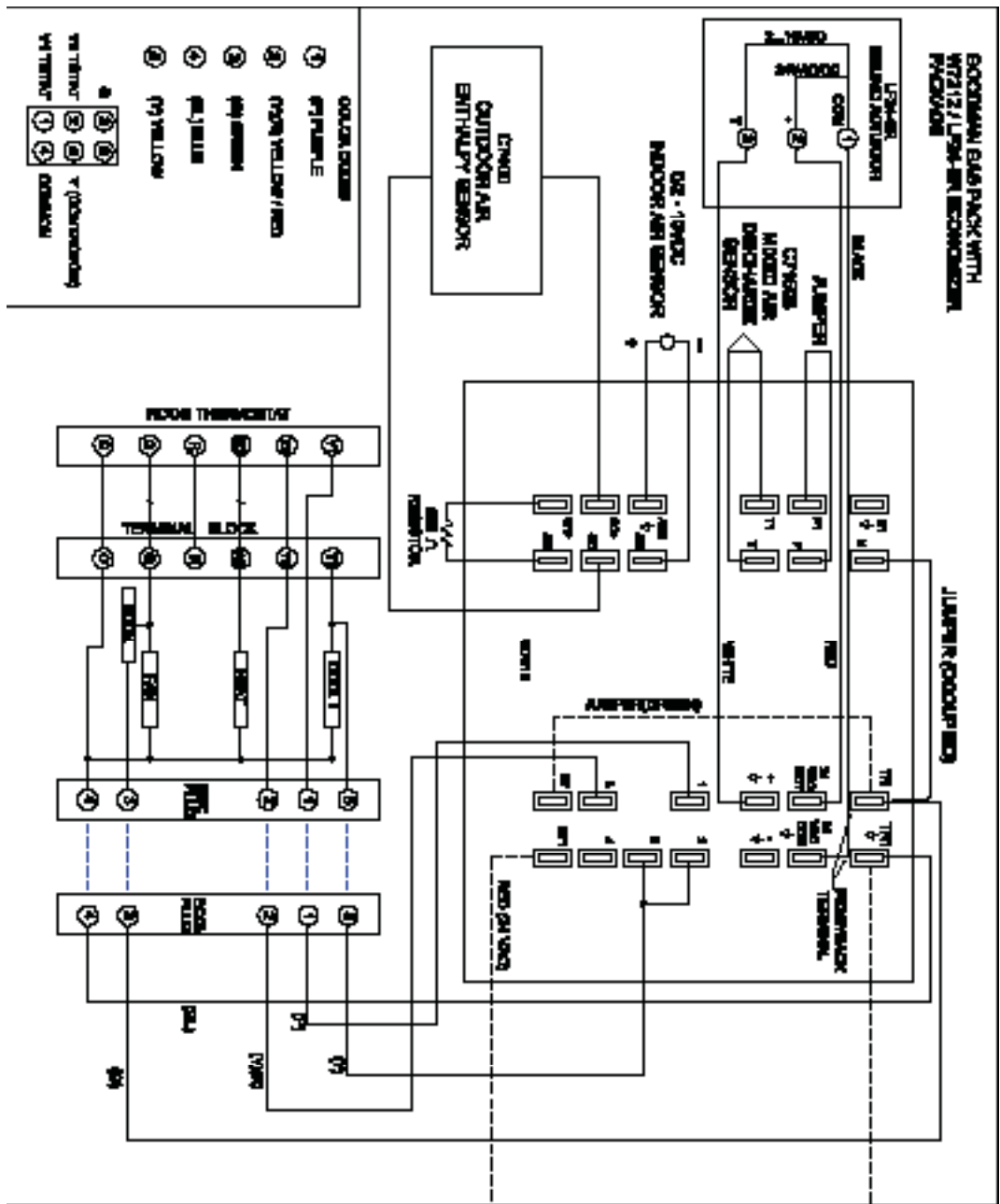
1	Power Exhaust Hood
2	Support Legs
1	Jumper Wire
1	Installation Instructions

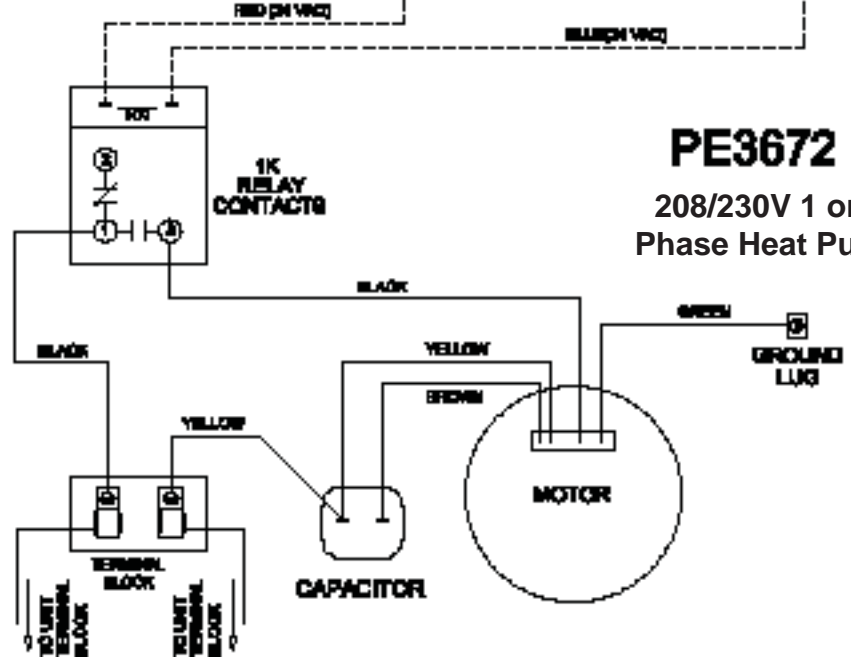
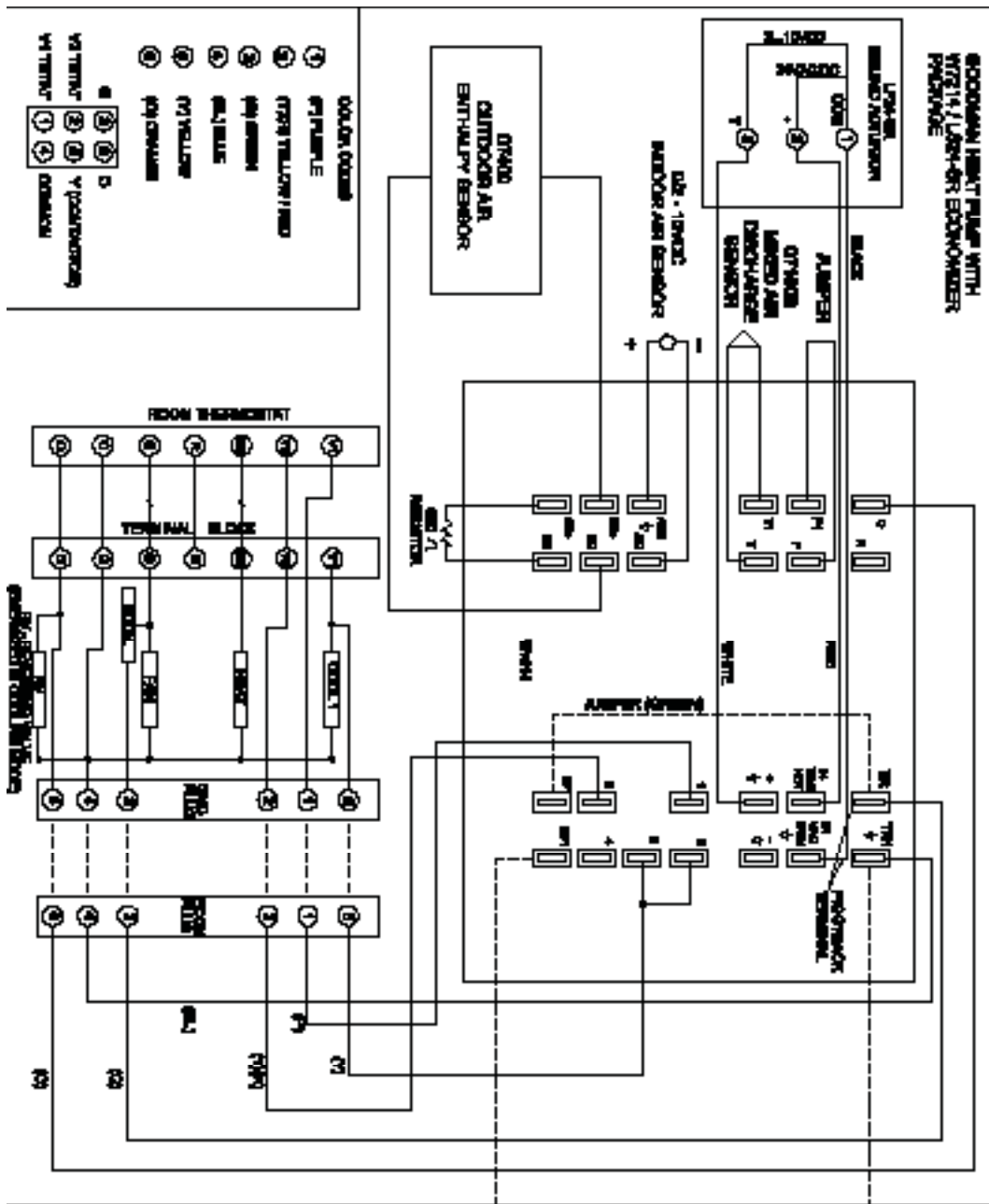
Model	Voltage	Motor				
		HP	RPM	Type	FLA	Speeds
PE36722B	208/230-1-60	1/3	1625	Direct Drive	2.0	3
PE36724B	460-1-60	1/3	1625	Direct Drive	9	2
PE36727B	575-1-60	1/2	1625	Direct Drive	1	1

SEQUENCE OF OPERATION

This sequence assumes employment of a single enthalpy economizer using a two stage thermostat.

1. A call for cooling comes from room thermostat.
2. The enthalpy sensor determines if the atmospheric conditions are conducive for using outside air for cooling. If YES, the fresh air damper section of the economizer begins to open.
3. When the fresh air dampers are open approximately 70% of their full open capacity, the power exhaust contacts make and energize the fan motor to draw air through the return air from the space. There is a 60 +/-30 second time delay built into the economizer control before the fan motor actually energizes.
4. When the dampers modulate below the 70% open position due to a satisfied thermostat or atmospheric conditions, the power exhaust disengages immediately.





PE3672
208/230V 1 or 3
Phase Heat Pump

