



McDaniel Metals, Inc.

1318 Buschong
Houston, Texas 77039
Phone (281) 987-8400
Fax (281) 987-9494

Installation Instructions for PGED 101 & 102 DOWNFLOW ECONOMIZERS FOR GOODMAN / AMANA GPG/ APG GAS PACK 2-5 TON PACKAGE UNITS

Description: The PGED 101 & 102 downflow economizers are designed for the Goodman / Amana GPG-/ APG-GAS PACK 2 through 5 ton package units.

These economizers are designed to provide free air conditioning when outside conditions are appropriate. When the outside air is cool and dry enough, the economizer automatically opens to circulate this cool air, thereby eliminating the need to run the air conditioning compressor. This enables the building owner to lower his electrical costs and increase the life of the equipment. If the outside air becomes too warm or humid, the enthalpy control automatically closes the fresh air damper and the compressor begins operation. The economizer is fully modulating and therefore will automatically mix the fresh air and the return air proportionally to get maximum energy savings.

A single or two-stage room thermostat can be utilized to control the unit and the economizer. (Recommend GMC part #'s CHT18-60 for single stage thermostat & CHT90-120 for two-stage thermostat or equivalents). When a single stage thermostat is used, during a call for cooling the enthalpy control automatically selects "free" cooling or mechanical cooling depending on outdoor air conditions. If a two-stage thermostat is used, first stage "free" cooling or mechanical cooling based on outdoor conditions and the enthalpy setting. If the first stage is in the "free" cooling position and does not keep up with the load, the second stage makes (energizes) mechanical cooling. The two-stage thermostat optimizes cooling cost and comfort while taking full advantage of the package unit / economizer combination.

Note: The economizer is not energized in the heating cycle of the heat pump package unit.

Installation:

1. Uncrate economizer. Inspect for damage.
(NOTE: Report any damage immediately to the freight company.)
2. CAUTION: OPEN DISCONNECT SWITCH TO PREVENT INJURY!
3. Remove return air cover plate from unit.
4. Remove side access panel from unit.

5. Remove bottom return air panel on the inside of the unit.
(NOTE: On the 2-3 ½ ton models you will need to remove the blower housing in order to gain access to the panel screws and to install economizer).
6. Slide economizer into side return air opening and make sure the internal damper assembly sits securely over bottom return air opening. Secure with sheetmetal screws.
7. Connect wires from economizer to terminal block per wire diagram.

NOTE: Ensure the wire harness does not interfere with the movement of the dampers during operation. Tie wire harness securely to the wall of the return air compartment.

8. Secure hood to the unit with sheet metal screws.
9. Seal-water tight around hood.
10. Close disconnect switch.

NOTE: When using economizer connect Y1 & Y2 on low voltage thermostat leads. (See wiring diagram on unit.)

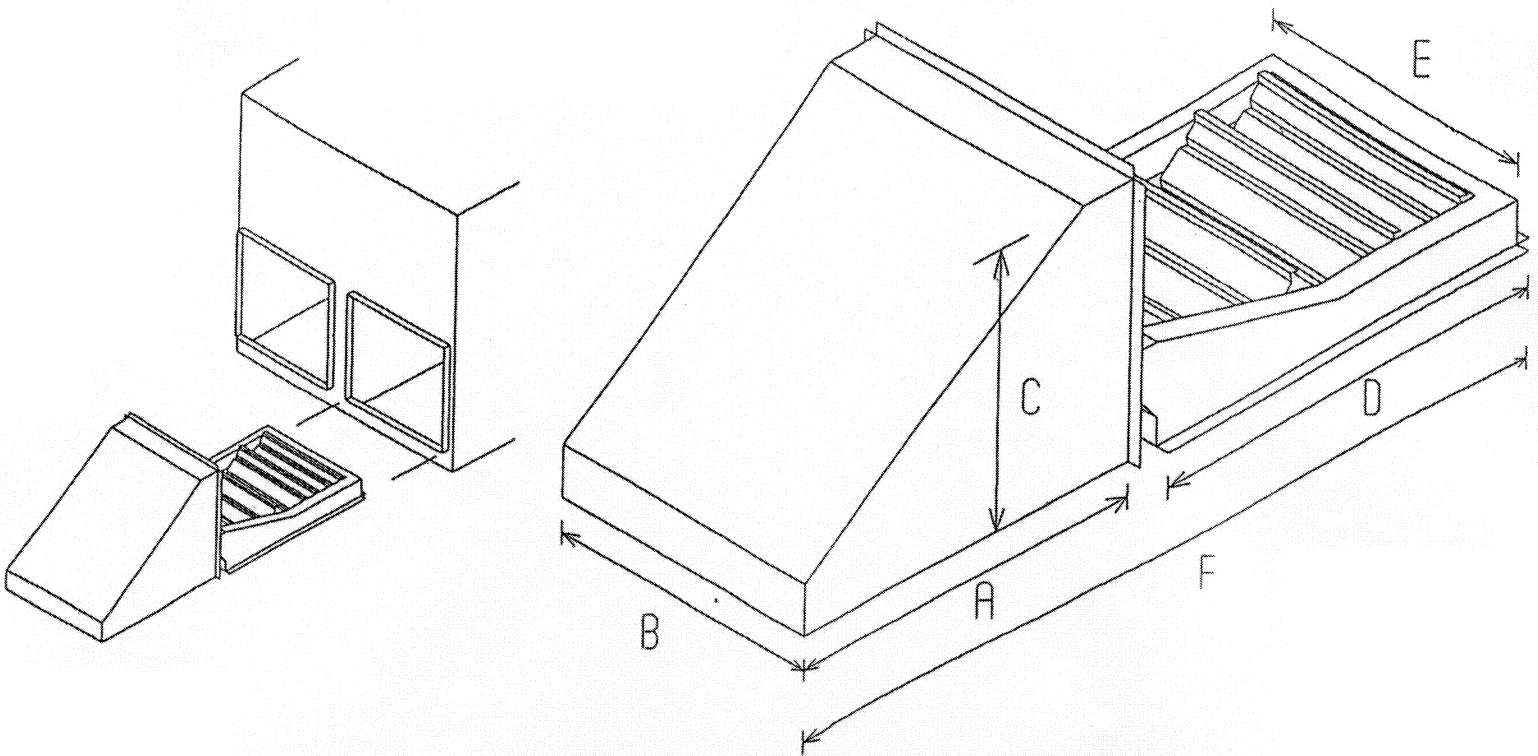
11. Reset enthalpy and / or minimum position potentiometer if setting other than factory setting is desired. (Access controls through filter door opening.)
12. Check out economizer per control manufacturer's literature.
13. Reinstall fan access plate from Step 3.

NOTE: FILTER CANNOT BE INSTALLED IN UNIT WHEN DOWNFLOW ECONOMIZER IS INSTALLED. FILTER MUST BE PLACED IN RETURN AIR OUTSIDE UNIT.

PGED 101/102/103
 DOWNFLOW ECONOMIZER
 FOR GOODMAN / AMANA GPG/ APG GAS PACK 2-5 TON
 PACKAGE UNITS

SPECIFICATIONS:

1. Fully modulating spring return 24 VAC motor.
2. Provides up to 100% fresh air.
3. Fully assembled and factory wired.
4. Integral barometric relief.
5. Adjustable enthalpy type.
6. Adjustable mixed air temperature and minimum fresh air.
7. Plugs into receptacle in unit, no field wiring.
8. Replaces horizontal duct panel.
9. All installation hardware and instructions included.



	A	B	C	D	E	F
PGED101/102	20	16.25	16	23.5	12.5	45.75
PGED103	20	16.25	18	23.5	12.5	45.75

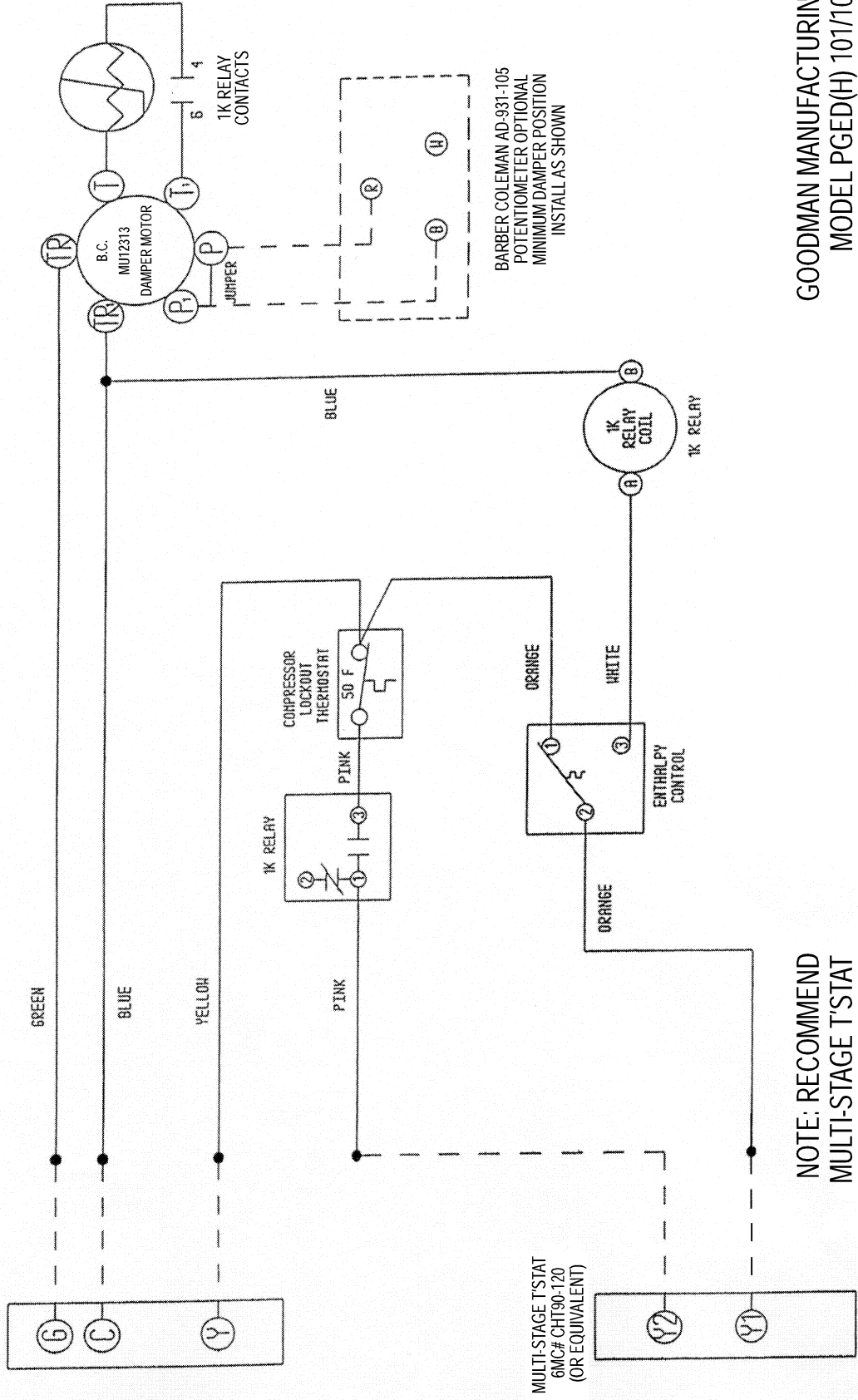
NOTE: RECOMMEND

MULTI-STAGE T'STAT
GMC# CHT90-120
(OR EQUIVALENT)

- FACTORY INSTALLED WIRING
- - - - FIELD INSTALLED WIRING
- FIELD INSTALLED WIRE NUT

NOTE: ENTHALPY CONTROL & RELAYS SHOWN IN NON-ENERGIZED POSITION

APG/GPG SERIES
 LOW VOLTAGE LEADS



NOTE: RECOMMEND
MULTI-STAGE T'STAT
GMC# CHT90-120
(OR EQUIVALENT)

GOODMAN MANUFACTURING CO.
MODEL PGED (H) 101 & 102
ROOFTOP UNITS
GPG 7 APG SERIES WIRING DIAGRAM

MCDANIEL METALS, INC.
1318 BUSCHONG STREET
HOUSTON, TEXAS 77039
VOICE (281) 987-8400
FAX (281) 987-9494

GOODMAN MANUFACTURING CO.
MODEL PGED(H) 101/102
ROOFTOP UNITS
AGP/GPG SERIES WIRING DIAGRAM